

# CERTIFICATE OF ANALYSIS

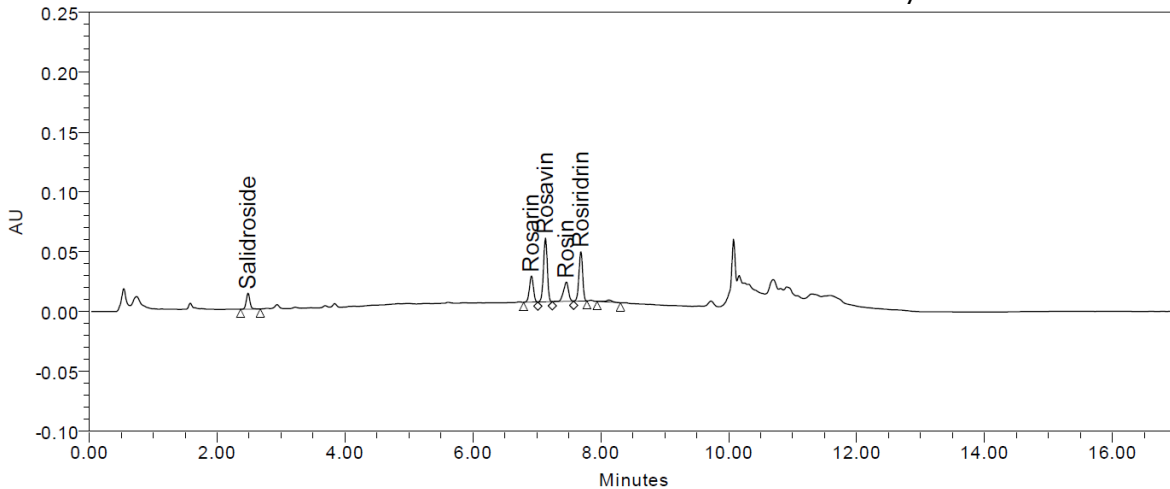


12661 HOOVER STREET GARDEN GROVE, CA 92841 | P. 714-754-4372 | F. 714-668-9972 | WWW.ALKEMIST.COM

**Report Issued To:** Harrison Sport Nutrition SL  
C/Lanjarón 6A  
Albolote Granada 18220  
ESP

**Sample Name:** FP 01890 - HSN Essentials - Rhodiola rosea  
400mg 2.0 120vcaps  
**Description:** Capsule powder; Capsules [white bottle]  
**Lot #:** L220114A4  
**AL #:** 22132LZE\_2  
**Analysis ID:** 177911  
**Received:** 05/12/22

## Determination of Rosavins and Salidroside Content by HPLC



Ret. Time (min)	Compound Name	Prep 1 (%)	Prep 2 (%)	Average (%)	Average (mg/cap)	Specification	Result
2.5	Salidroside	0.887	0.916	0.902	4.665	Report Only	N/A
6.7	Rosarin	0.643	0.656	0.650	3.361	N/A	N/A
6.9	Rosavin	1.503	1.562	1.532	7.928	N/A	N/A
7.5	Rosin	0.606	0.616	0.611	3.161	N/A	N/A
	Total Rosavins	2.752	2.834	2.793	14.450	Report Only	N/A

### Chromatographic Conditions:

Method: USP 43 - Powdered Rhodiola rosea Capsules  
Column: AP277 Luna 2.5µm C18(2)-HST (100 x 3.0 mm)  
Temperature: 40°C  
Flow Rate: 1 mL/min  
Injection Volume: 1 µL  
UV Detection: 205 nm  
Mobile Phase: Water  
Acetonitrile  
HPLC Instrument: UPLC\_1

### Sample Preparation:

Transferred approximately 100 mg into a 25 mL volumetric flask and filled to volume with methanol. Sonicated 15 mins at room temperature. Let cool and filtered through a 0.45 µm PTFE syringe filter into HPLC vial for analysis.

### Report Summary:

Conclusion: This "FP 01890 - HSN Essentials - Rhodiola rosea 400mg 2.0 120vcaps" test sample contains an average of 5 mg/capsule salidroside and 14 mg/capsule total rosavins on the as is basis.  
Fill Weight: 1 capsule = 517.3605 mg  
OOS Reference: N/A  
Empower File: 15422 Rosavins

**Analysis Date :** 06/08/22      **Analyzed By:** D Jimenez

**Authorized By:** Celine Deneuve,  
Analytical Chemistry Supervisor