



Material Tested

FP 02483 - HSN Essentials - White Kidney Bean Ext. 2.0 120
120vc

For: Harrison Sport Nutrition SL

Lot #: L210922A1

Botanical: *Phaseolus vulgaris* L. [Fabaceae], Seeds

Sample ID: 22132VWG_1, Plate #: 176759

What We've Tested

We tested this sample by High Performance Thin Layer Chromatography. HPTLC is a technique for separating phytochemical compounds within plant material, as well as other chemical compounds, to verify its identity and/or purity.



Conclusion



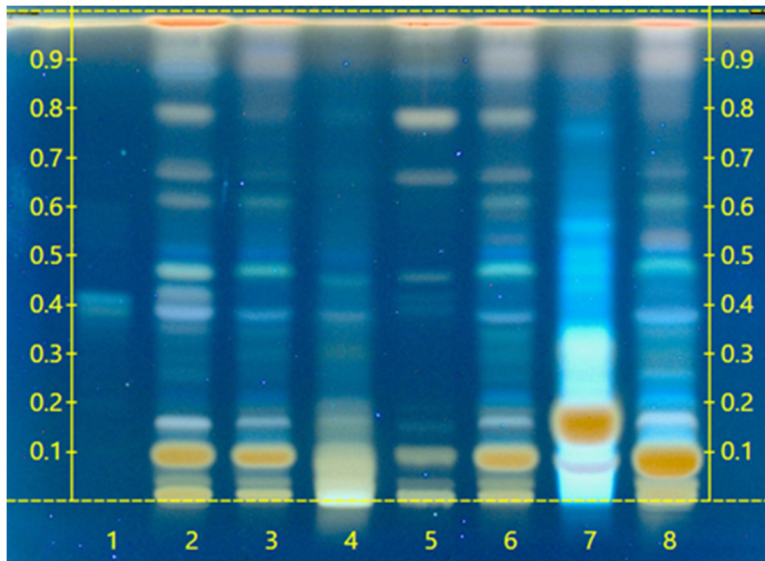
This sample conforms to *Phaseolus vulgaris*, Seeds

We tested the sample against known authenticated reference materials to affirm identity, when applicable.



Test Details

High Performance Thin-Layer Chromatography



We tested the sample against different parts of the same plant when possible and as needed.

We tested this sample against known adulterants when applicable.

Lane 5 shows the sample being tested.

Lanes 2 & 3 show the reference material used to compare with the sample.

