



Material Tested

FP 02230 - HSN Essentials - Green Tea 500mg 2.0 120 vcaps
For: Harrison Sport Nutrition SL
Lot #: L211130A1
Botanical: *Camellia sinensis* (L.) Kuntze [Theaceae], Leaves
Sample ID: 22132ECF_1, Plate #: 176744

What We've Tested

We tested this sample by High Performance Thin Layer Chromatography. HPTLC is a technique for separating phytochemical compounds within plant material, as well as other chemical compounds, to verify its identity and/or purity.



Conclusion



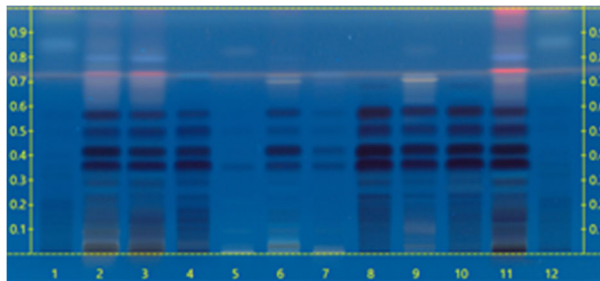
This sample conforms to *Camellia sinensis*, Leaves

We tested the sample against known authenticated reference materials to affirm identity, when applicable.



Test Details

High Performance Thin-Layer Chromatography



We tested the sample against different parts of the same plant when possible and as needed.

We tested this sample against known adulterants when applicable.

Lane 10 shows the sample being tested.

Lanes 2,3, and 11 show the reference material used to compare with the sample.

